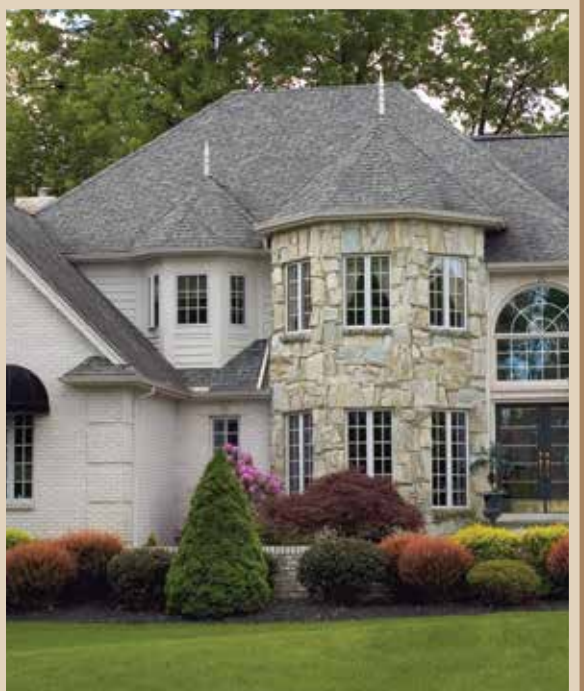




Globally Proven
Construction Solutions



Adhered Masonry Veneers



For additional product information snap the image with your phone. Get the free app for your phone at <http://gettag.mobi>

THE CHALLENGE

The explosive increase in popularity of adhered masonry veneer facades has created a need for higher performance, factory produced installation materials to assure consistently high quality installations.

Up to now, the installation of manufactured stone masonry veneer has often depended on the use of site-mixed unfortified masonry mortars that are subject to large variations in consistency, quality and performance and which also limit the installation technique to that of traditional masonry.

Many projects have been plagued by delaminating stone and water intrusion among other installation issues inherent to materials and techniques which are limited in flexibility and margin for error. This traditional method is not engineered as part of a complete wall system and therefore does not offer warranties from a reliable source willing to stand behind the installation.

THE SOLUTION

Realising these shortcomings, and based on our globally proven technology, LATICRETE has developed an installation system that provides a permanent, high strength installation that is freeze/thaw stable and protected from water intrusion.

Backed by the LATICRETE® System materials, the LATICRETE Masonry Veneer Installation System (MVIS™) allows for increased productivity utilising either traditional masonry installation techniques or the “tile setter’s” method.

Vastly expanded architectural details are offered at LATICRETE to help design professionals, contractors and installers understand the range of possible applications — and appropriate products and techniques which will assure long-term performance on projects of all types.

BUILDING INFORMATION MODELING

LATICRETE Building Information Modeling (BIM) information has been updated on the Autodesk Seek website, and new methods have been created and added to the Autodesk Seek website.

These new methods include 5 methods for installation of MVIS products on exterior facades. This new BIM info/methods are listed below:

- MVIS 103 - Cement Backer Board (Exterior) - Thin Bed with LATICRETE Masonry Pointing Mortar
- MVIS E101 (E) - Concrete or Masonry Wall (Exterior) - Thick Bed Over Metal Lath with LATICRETE Masonry Pointing Mortar
- MVIS E102 (E) - Concrete or Masonry Wall (Exterior) - Thin Bed with LATICRETE Masonry Pointing Mortar
- MVIS E103 (E) - Concrete or Masonry Wall (Exterior) - Thick Bed with LATICRETE Masonry Pointing Mortar
- Mortar MVIS E104 (E) - Solid Backing, Plaster, Exterior Sheathing, or Masonry (Exterior) - Thick Bed Over Metal Lath with LATICRETE Masonry Pointing Mortar



THE LATICRETE ADVANTAGE

- A Complete Installation System
- Factory Controlled Quality
- Labour and Materials Warranty*



MASONRY VENEER MORTAR

A patented polymer fortified mortar designed specifically for the installation of stone, thin brick and manufactured stone masonry veneers.

Our unique formulation provides exceptional workability, maximum non-sag performance and extended adjustability of installed pieces for all vertical installations. Masonry Veneer Mortar allows for more rapid installation resulting in higher labour production rates, and maximum

bond between substrate and selected veneers.

See Data Sheet DS-1076 for complete product information.



HYDRO BAN®

A single component self curing liquid rubber polymer that forms a thin, flexible, seamless, load-bearing and breathable waterproofing/crack isolation membrane. HYDRO BAN® bonds directly to a wide variety of substrates and does not require the use of fabric in the field, coves or corners.

See Data Sheet DS-1036 for complete product information.



MASONRY POINTING MORTAR

Designed specifically for easy installation and clean-up when used with natural or manufactured stone. Easy to mix and highly workable, Masonry Pointing Mortar provides a finished joint that is dense, hard and durable.

A premium formulation of a blend of high strength portland cement, graded aggregates and colour-fast pigments. Mix with water or 1776 Grout Enhancer.

See Data Sheet DS-1075 for complete product information.



3701 FORTIFIED MORTAR BED

Designed for use where metal lath or a leveling bed is a desired element of an installation, 3701 Fortified Mortar Bed is a one-step polymer fortified blend of

carefully selected raw materials, which when mixed with water forms a high-strength and easily workable mortar for wall applications.

See Data Sheet DS-1000 for complete product information.

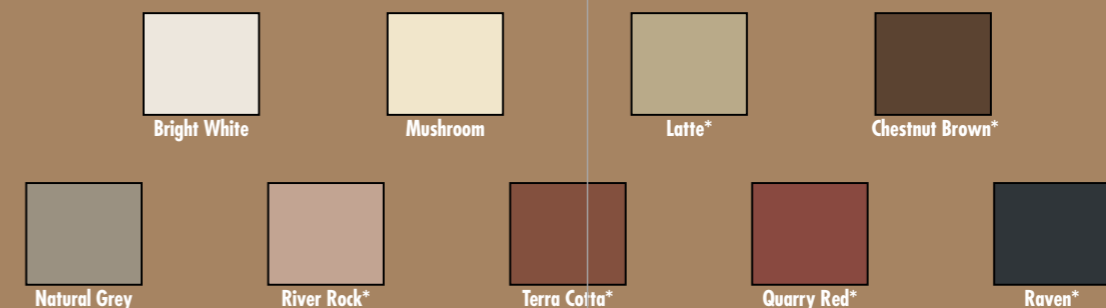


LATASIL™

High performance silicone sealant designed for interior or exterior use in coves, corners, changes in plane and expansion joints in applications of stone, thin brick or manufactured stone masonry veneers. Ideal for wet area applications.

See Data Sheets DS-1074 for complete product information.

LATICRETE® MASONRY POINTING MORTARS COLOUR AVAILABILITY*



*Special order colour.



A LETTER TO SPECIFIERS:

Re: LATICRETE® Masonry Veneer Installation System (MVIS™)

With the growing popularity of thin adhered masonry veneers comes a need for a high quality, reliable and fully tested installation system for installing these unique finishes. LATICRETE has developed the Masonry Veneer Installation System (MVIS™) to do just that. Fully backed by extensive independent testing and the LATICRETE System Warranty, this engineered installation system provides the peace of mind you need when specifying the right materials for successful performance.

Traditional wisdom has led the industry to the use of polymer fortified adhesive mortars for the installation of thin veneers, but the variety of products and performance levels make the choice of the various components of the installation system an uncertain task. It has generally been accepted that high bond strength, flexibility, durability, waterproof protection and ease of installation are all required of any system employed to install these veneers. LATICRETE MVIS delivers all these and more, providing options like the use of Cement Backer Board substrates, the ability to accommodate a drainage plane in the wall assembly, and the possibility of adding continuous insulation to the construct – all while employing the highest performance available for installing the finish veneer.

In the construction industry new methods of building are constantly being developed. LATICRETE MVIS keeps you ahead of the curve by offering the solutions to the challenges posed by these new methods in advance. We invite you to learn more about how LATICRETE MVIS delivers value by visiting us at www.laticrete.com.au.

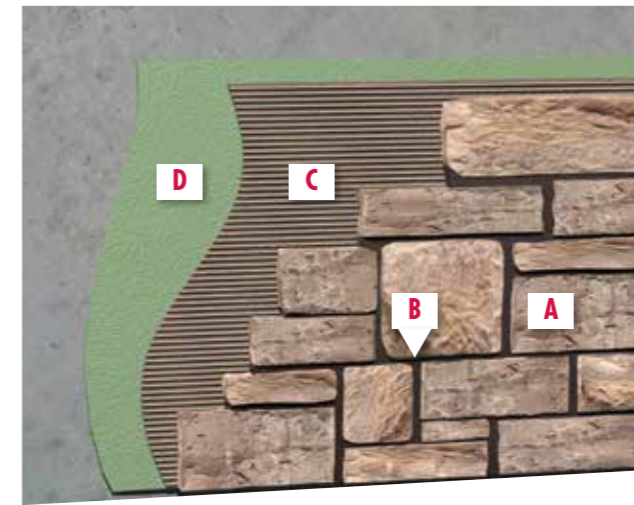
Thank you,

LATICRETE Pty Ltd.

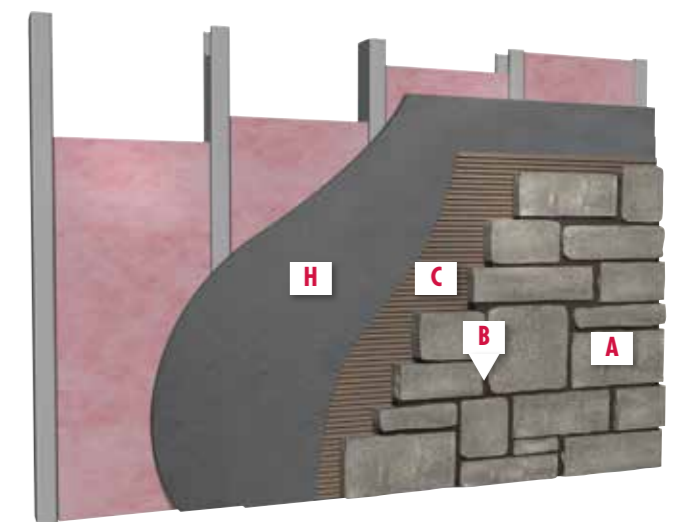
Innovative Tile and Stone Installation Systems

LATICRETE Pty Ltd • 29 Telford Street, Virginia, QLD 4014 Australia • Tel 07 3865 1599 • www.laticrete.com.au

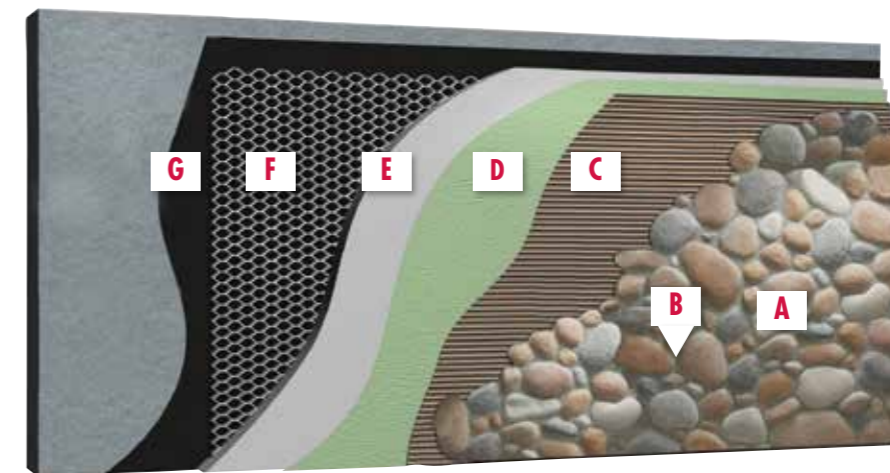
W202-E
Concrete – Direct Bond, Thin Bed Method With Waterproofing – Exterior Wall



W244-I
Wood Framing or Cement Backer Unit/Steel – Interior Wall



W221(E)
Concrete or Masonry – Cement Leveling Bed With Wire Lath and Waterproofing – Exterior Wall



NOTE: 1. Substrates scheduled to receive manufactured stone, natural stone and thin brick must be structurally sound, rigid and conform to good design/engineering practices in accord with all applicable building codes with maximum deflection under all live, dead and impact loads, including concentrated and all anticipated loads of L/360 for thin brick and ceramic tile and L/480 for manufactured and natural stone. Steel and wood frame

constructs shall also be designed to meet this criteria. Lateral bracing and edge support for cement backer board panels is required.
2. Masonry Pointing Mortar is designed to meet product applicable project specifications. Masonry Pointing Mortar does not inhibit efflorescence from occurring in natural or manufactured stone facade installations. Efflorescence is a normal condition that may occur when installing portland cement based

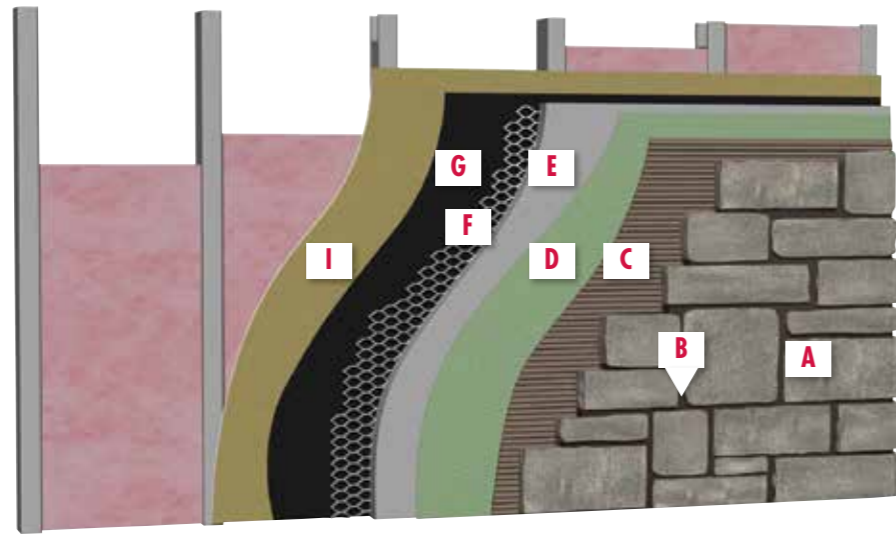
products. During installation, strike joints in a consistent time frame relevant to application time. Masonry Pointing Mortar should be thumbprint dry before striking. Striking joints too early or too late can create colour inconsistencies.

DETAIL LEGEND

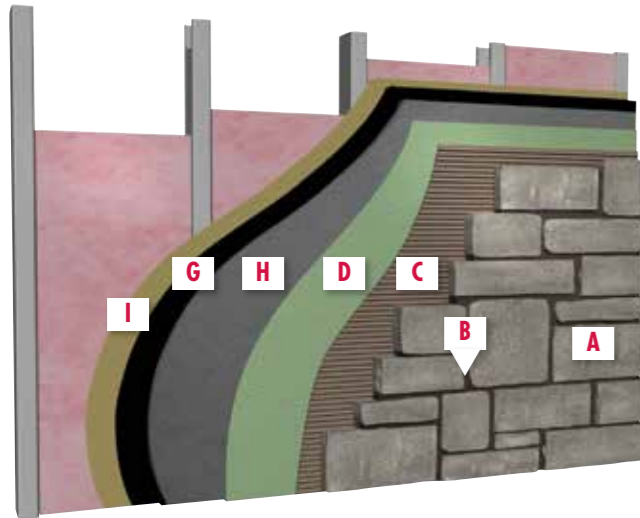
- A** Adhered Masonry Veneer
- B** Masonry Pointing Mortar
- C** Masonry Veneer Mortar

- D** HYDRO BAN® (for warranty qualification some applications require waterproofing)
- E** 3701 Fortified Mortar Bed

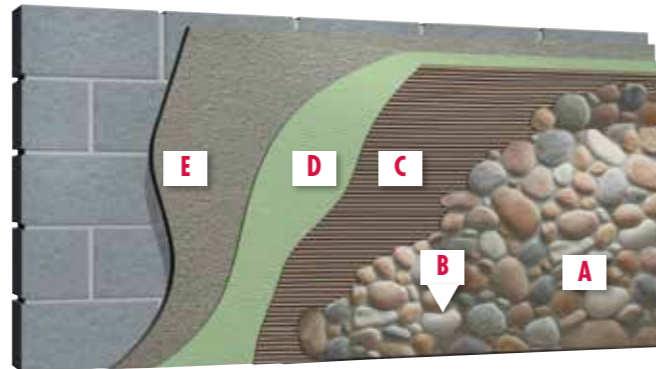
W265
Steel Framing with Exterior Rated Sheathing – Cement Leveling Bed with Wire Lath and Waterproofing – Exterior Wall



W244-E
Wood Framing or Cement Backer Unit/Steel – Exterior Wall



W300
Concrete or Concrete Masonry Unit (CMU) – Cement Leveling Bed With Waterproofing – Exterior or Interior Wall



3. Masonry Pointing Mortar colour samples are guides only. LATICRETE does not warrant colour matching to any colour guide produced. Actual shade and texture will depend on job site conditions, lighting, installation techniques, and types of tile or stone used. Verify actual appearance and compatibility with a test area before installing. Blend coloured mortars with different control numbers. No claims for colour shade variations will be honored.

4. Please consult LATICRETE Technical Services for more information. 1800 331 012. www.laticrete.com.au, technicalservices@laticrete.com.au.

5. For information on pumpable scratch and brown coats, contact LATICRETE Technical Services.

6. For complete application information and limitations consult related Product Data Sheets and Execution Statements related to these details and applicable standards.

7. As a professional courtesy, LATICRETE offers technical services free of charge. The user maintains all responsibility for verifying the applicability and suitability of the technical service or information provided.

- F** Metal Lath, 3.4# Galvanized Diamond Wire Lath
- G** Cleavage Membrane 6.5 kg Builders Felt or 100 um Polyethylene

- H** Cement Backer Board
- I** Exterior Rated Sheathing

COMPLETE SYSTEM WARRANTIES



LATICRETE offers a complete range of comprehensive System Warranties. These cover 100% labour and materials for Masonry Veneer Installations Systems over concrete and masonry substrates for both interior and exterior applications.

LATICRETE Warranties cover any suitable tile or stone manufacturers product, allowing you to select the appropriate product and finish you desire for your project.

- LATICRETE Customisable System Warranties are available to suit your specific project requirements.

LATICRETE goods come with guarantees that cannot be excluded under the Australian Consumer Law. You are entitled to a replacement or refund for a major failure and for compensation for any other reasonable foreseeable loss or damage. You are also entitled to have the goods repaired or replaced if the goods fail to be of acceptable quality and the failure does not amount to a major failure.



LATICRETE is a member of The Masonry Veneer Manufacturers Association (MVMA), an organisation representing manufacturers and suppliers of manufactured stone and brick veneer products.

The MVMA proactively seeks to advance the growth of manufactured masonry veneer products through technical advocacy and awareness efforts.

- Supports the Development of ASTM Product and Installation Standards as well as ICC-ES Codes and Standards
- Establishes Cooperative Relationships With NAHB, the Green Building Council, LEED, AIA, ASLA and CSI

GREENGUARD Certified & LOW VOC LEED COMPLIANT

Many companies might say their products are low VOC, only one independently certifies it – LATICRETE.

- Third Party GREENGUARD Certification, required to meet stringent indoor air quality standards
- Certified by GREENGUARD for Children & Schools
- Helps contribute toward LEED certification
- Product certifications readily available at www.laticrete.com/green



LATICRETE Pty Ltd is a proud member of the Australian Stone Advisory Association Ltd. Many of the ASAA's core foundations reflect those from which LATICRETE has built its global business over the last six decades. In particular, we share the strong belief/commitment that professional yet unselfish education is a major factor in building and sustaining the stone business... in every phase of its being. Just as the ASAA "provide(s) information about the Stone Industry and related technology for the public benefit and not for particular businesses and make(s) the benefits of scientific research publicly available," we at LATICRETE are always ready and willing to help those eager to learn the correct and most up-to-date methods of stone installation.

The installation solutions offered via our Masonry Veneer Installation System (MVIS) have been formulated with today's most cutting-edge technologies combined with a worldwide track record that continues to be architecturally accepted and globally proven. These, we look forward to sharing with industry professionals.





**Globally Proven
Construction Solutions**

LATICRETE Pty Ltd
29 Telford Street
Virginia, QLD 4014
Australia
1 800 331 012
www.laticrete.com.au

DS-1087-0814

©2014 LATICRETE Pty Ltd
All trademarks shown are the intellectual properties of their respective owners.
Kevlar is a registered trademark of Dupont Products Company.
GREENGUARD Indoor Air Quality is a registered trademark of the GREENGUARD Environmental Institute.

• **Mortar Colour Guidelines** — Masonry Pointing Mortar colour samples are guides only. LATICRETE does not warrant colour matching to any colour guide produced. Actual shade and texture will depend on job site conditions, lighting, installation techniques and types of tile or stone used. Verify actual appearance and compatibility with a test area before installing. Blend coloured mortars with different control numbers. Follow ANSI A108.10/MMSA Bulletin #9. No claims for colour shade variations will be honored.